

SSP 7 Vancouver Planning Citizens Committee Session

2008.10.04 @ Kensington Centre

The Post Mortem & Some Conclusions Draft

Mapping Big Conclusions

- Life is about to change: the energy is gone, the city has to restructure.
- Local food, local industry, alterate mobility modes, a change in basic lifestyle is unavoidable. What directions do we take?
- Energy capture inside the community is as important as food coming from inside the community.
- Realistic and affordable housing options means transition of much of what now exists, some in small ways, some in major ways.
- The Green fingers of sustainable community form is as important as the ecodensity housing and energy transitions.

Pattern Of Community Shifts

- The city administrative planning boundaries are arbitrary, the personal experience is at a small neighbourhood scale of 5000 or so people, a 10 to 12 block cluster, relating to schools, corner stores, knowing people by sight.
- The natural transition and maturation of any city allows for nodes to become another form of community, an urban village.
- the need to revive streetcar neighbourhoods, corner pub nuclei, and railway line mixed villages and industry makes for another city.....

Governance

- Learning from Boston or the Swiss; the small neighbourhood acts as an open democracy to arrive at mutually happy solutions.
- The city sets some general objectives to work within.... local and regional, that is above and below current concerns.
- The Metro Government becomes elected and accountable and takes on the serious coordination of dozens of now uncoordinated functions: planning, transit, energy systems, health, schools, police, fire department, codes and approvals.

SSP 7 Sunset Administrative Planning District
Vancouver || SSP POST MORTEM



1. Arterials Defining Quiet Neighbourhoods
-- and real neighbourhoods are small: 5000 pop.

Vancouver Community Planning - SSP Section
Balfour & Associates - Strategic Planning
2008-10-04

SSP7

The Kensington Workshop

Arterials

- Defining Quiet Islands of secure neighbourhoods with self identity.
- A Planning District has 10-20 such neighbourhoods or potential urban villages.
- Industry becomes integrated with the town, not isolated.
- New Green Arterials are added.



SSP 7 Sunset Administrative Planning District
Vancouver || SSP POST MORTEM



2. Nodes Defining Urban Villages/High Density, Mid rise.
-also real neighbourhoods & small: 5000 pop.

Vancouver Community Planning • SSP Session
Balfour & Associates • Strategic Planning
2006-10-04

Urban Villages

- Node related
- High density (100 upa)
- Mid rise (6.6.6 floor formula)
- Full weekly services within walking distance for urban village and for the single family island neighbourhoods.



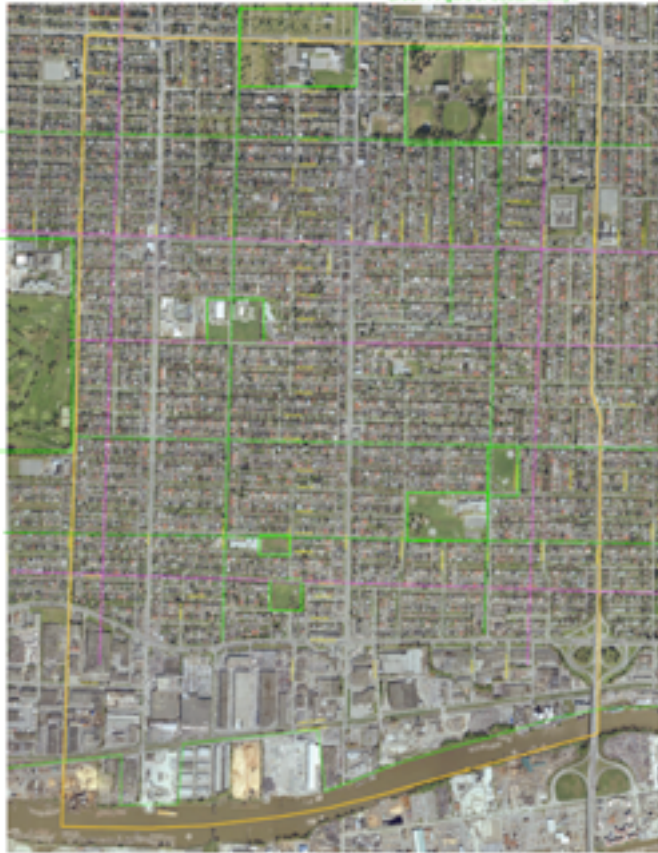


Streetcars & a New River Line

- Conversion to electric drive public transit; arterial streetcars, skytrains, River Rail LRT.
- New Green Arterials for private electric cars in addition to bike ways and pedestrian mews.
- 40% of the city is streets.....

SSP 7 Sunset Administrative Planning District
Vancouver II SSP POST MORTEM

Vibrant Neighbourhoods?
Urban Villages?
Green Fingers of Sustainability?



4. Green spaces & Green fingers: opening up the city.
and Electric Car Dedicated Routes

Community Planning • SSP Decision
Landscape Architecture • Strategic Planning
2008-10-04

Green Fingers

- Marbelization means increasing some density and growing urban villages, but also:
- Green parks, green streets, public gardens make for a new commons, the Green Fingers of Sustainable Community



6. New Energy Sources:
The whole surface of the city is an energy source:
roofs, yards, streets, wind and below ground too.

Energy Capture

- All the city surface as well as the air above and the ground below is a source of friendly energy to be harnessed.
- Public co-operatives are needed to create the Matrix for some systems; like geothermal.

Marbelization

- The transition of the pattern of community over a short to mid term can provide new housing, new energy, new green spaces, new food sources and new localized industry, all less dependent on long range travel.



City Codes as Liabilities

- The need to change is countered by layers of regulation built up over decades.
- Most of the old rules are geared to oil age/automobile era assumptions which do not respect land or energy conservation.
- It is time to houseclean old rules and liberate neighbourhoods to set their own course in innovation, energy saving and food production, or they will have to break old rules just to innovate.

Community Cooperation

- Working together and acting locally is now a conscious priority of the post oil community. Local energy capture systems are needed, starting with streets and schools as geothermal heat sources.
- After local farmers markets other cooperative actions include food processing, community gardens, local barter systems, to care and comfort of your friends and neighbours.
- No friend or family left behind?

Conclusions:

- We also do not have much time to deal with radically needed changes to our pattern of community.
- We knew from the Club of Rome in 1972 and others that we would be at the end of resources in this time period.
- Plan B is now not an option but a reality. What needs to be cleared out of the way for community readiness?